

## What is semen analysis?

Semen analysis is the gold-standard test performed to assess the fertility potential of a male. Several important parameters are measured which include semen volume, sperm concentration, sperm motility and sperm morphology. All parameters are compared to reference ranges set by the World Health Organisation (WHO).

The total number of spermatozoa per ejaculate, sperm concentration and the extent of progressive sperm motility are related to pregnancy rates. Motility assessment is usually performed using computer-aided sperm analysis (CASA).

## How do I get an appointment?

You will need to be referred to us by a clinician. Once we have received your referral we will send you out a pack to the address provided to us. This pack will contain instructions, a production form, sample pot and appointment information. **These instructions must be read in advance of attempting to produce your sample.**

If you cannot make the appointment we have sent you please contact the laboratory on 0151 702 4214 in advance to reschedule. We are unable to accept any samples without an appointment.

## How can I produce the sample?

Samples should be collected by masturbation. **Do not** produce your sample using lubrication, condoms or through coitus interruptus.

If you are unable to masturbate, special non-toxic condoms designed specifically for the collection of semen samples are available for use at home. Please ask in advance of your appointment if this is something you require.

## How do I collect the sample?

- In order to obtain an optimum sample you are required to abstain from any sexual activity (masturbation or intercourse) for a minimum of 2-3 days, but no more than 7 days, before your appointment date.
- Produce your sample by masturbation into the non-toxic sterile pot provided in your pack. Your pot must be labelled with your name, DOB and laboratory identification number.
- Please ensure you attempt to collect all of the semen produced. It is important you **notify us** if you missed some of your sample as it can have an impact on your results.
- Once the sample has been collected please ensure the lid is screwed on tightly and place the pot inside the sealable bag provided.
- Ensure you bring the **fully completed** request form with you to the hospital. We

cannot accept your sample until this has been completed correctly.

## Where can I produce the sample?

You may produce your sample at home if you can deliver it to the laboratory at your allotted appointment time and **within one hour of collection**. We are located on the second floor of Liverpool Women's Hospital. Please follow signs for the Hewitt Fertility Centre. Whilst travelling from home it is important you keep the sample close to the body as sperm are sensitive to extremes of temperature. If preferable, your partner may deliver your sample and completed production form.

If you cannot deliver your sample to the laboratory within one hour of ejaculation or would rather produce your sample on site we have private, sound-proof production rooms available for use.

## How do I get my results?

Your results will be sent back to your **referring clinician** approximately **14 days** after your semen analysis.

## Repeat tests

If you cannot produce your sample or have an incomplete collection you will be asked to repeat the test after a further 2-3 days abstinence. If one or more of your sperm parameters are reported below the WHO reference range your clinician may request

Document Code: SCI-AND-FORM-116	Version No: 1
Document Title: Semen Analysis IFP Ormskirk	
Date of issue: 30.05.2019	Date of review: 30.05.2021
Owner: R Gregoire	Author: S Brooks

you repeat the test. This is to ensure your results are representative of a typical ejaculate.

### What if I have a poor result?

Discovering you have abnormal sperm may come as a shock and leave you feeling anxious. We have counsellors and patient support groups available at our Liverpool and Knutsford centres if you would like to discuss your feelings relating to this diagnosis.

You should always bear in mind that advances in fertility treatment mean that you may still be able to conceive. You can discuss your options and next steps with your clinician.

### Research and waste

The portion of your sample that is left over after diagnostic semen analysis is disposed of by incineration. It will not be stored for treatment purposes. In some cases, it may be used by us for training.

### Privacy

Please feel free to contact the laboratory on 0151 702 4214 if you require any further information about this test. Please note that the facilities at the Ormskirk site limit privacy so please be aware of this when dropping your sample off. If you do need to speak to the member of staff privately please let them know or telephone a colleague on the telephone

number provided with this leaflet who will be more than able to help with any issue you have.

### Queries

Please feel free to contact the laboratory on 0151 702 4214 if you require any further information about this test.

### Quality

The Lewis-Jones Andrology Department at the Hewitt Fertility Centre has provided a dedicated Andrology service for over 10 years. We were the first Andrology laboratory to be accredited for quality and competence by the UK Accreditation Scheme (UKAS).

Our laboratory is also enrolled in the UK National External Quality Assurance Scheme (UK NEQAS) which helps to ensure clinical laboratory test results are accurate, reliable and comparable wherever they are produced.

### Feedback

We appreciate and encourage feedback. If you need advice or are concerned about any aspect of care or treatment please speak to a member of staff or contact the Patient Advice and Liaison Service (PALS).

Email: [PALS@lwh.nhs.uk](mailto:PALS@lwh.nhs.uk)

Telephone: 0151 702 4353.

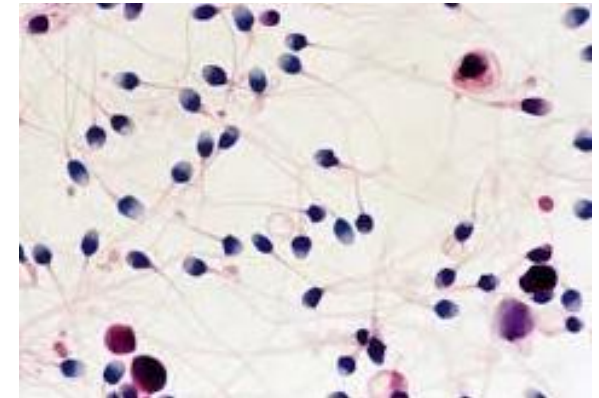


# The Hewitt Fertility Centre

## Diagnostic Semen Analysis

### Ormskirk site

### Information for patients



International Journal of Morphology 30(4):1544-1550

Seminology Laboratory,  
Department of Gynaecology & Maternity  
Ormskirk District General Hospital

0151 702 4214

<https://www.thehewittfertilitycentre.org.uk>

Document Code: SCI-AND-FORM-116	Version No: 1
Document Title: Semen Analysis IFP Ormskirk	
Date of issue: 30.05.2019	Date of review: 30.05.2021
Owner: R Gregoire	Author: S Brooks